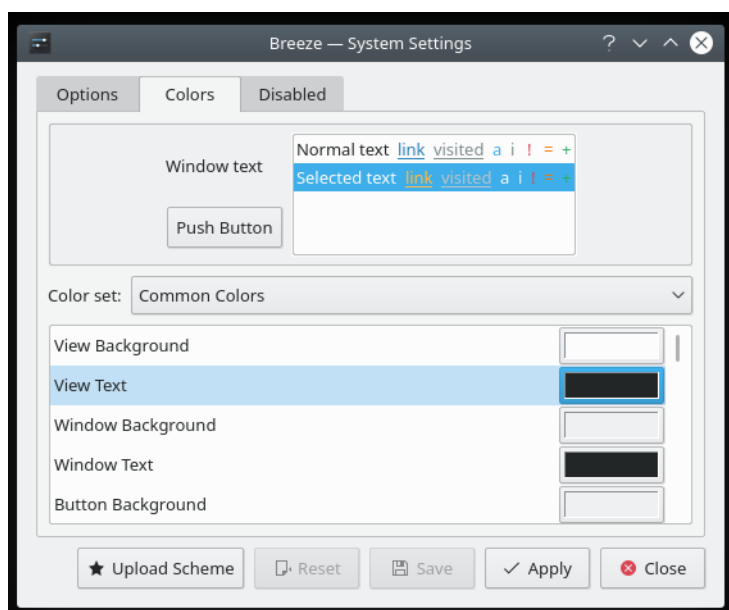


# Plasma 5.15 review - Pro momentum

By *Roy Schestowitz*

Created 14/03/2019 - 11:03pm

Submitted by Roy Schestowitz on Thursday 14th of March 2019 11:03:49 PM Filed under [KDE](#) [1] [Reviews](#) [2]



Plasma 5.15 is a very good release. It's not the fireworks release like 5.12, or perhaps the cannonade that we saw in the previous version, but there's still a heapload of great stuff to write home about, or tell your friends whom you like and cherish. A combination of steady improvements in the existing stuff, new and thoughtful design that shamelessly stabs at the professional world, continuous polish and fix of bugs and problems, and a strong current of enthusiasm imbuing it all.

On top of all that, the desktop environment purrs like a tiger, with lithe, smooth performance, great and consistent looks, and there's always something new and fun to find and discover. Things are coming together in a good way. Some issues too, because you can't have Linux without regressions. A couple of scars to add character, right. But the good stuff outweighs the bad stuff by a hefty margin. So if you're feeling somewhat dejected by the slump in creativity gripping the open-source world, cast your eyes Plasmawards, and you should find lots of fresh energy yonder. I'm liking, and I'm liking where this is headed. Most recommended.

[3]

[KDE Reviews](#)

---

**Source URL:** <http://www.tuxmachines.org/node/121711>

**Links:**

[1] <http://www.tuxmachines.org/taxonomy/term/108>

[2] <http://www.tuxmachines.org/taxonomy/term/101>

[3] <https://www.dedoimedo.com/computers/plasma-5-15-review.html>