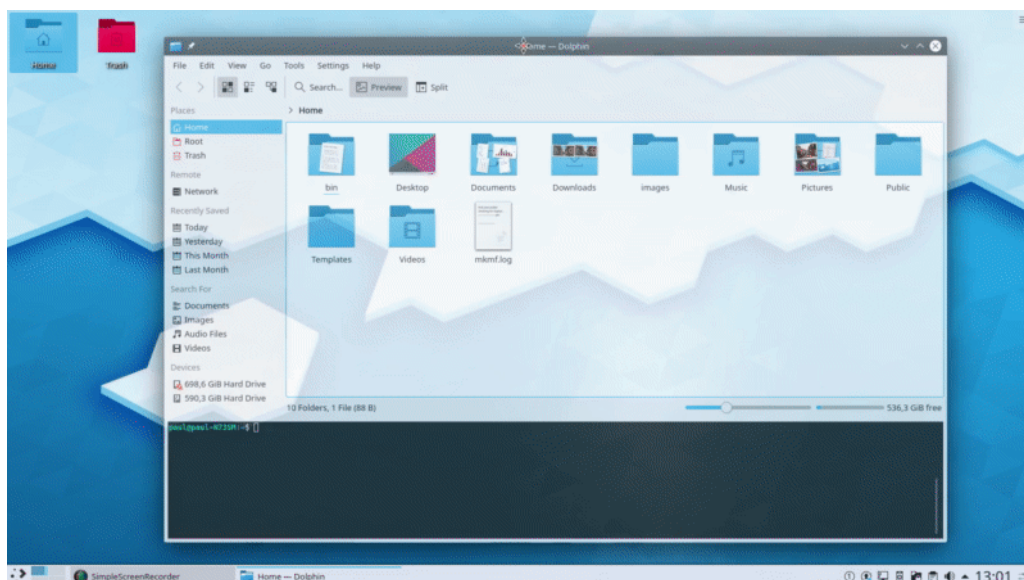


# Plasma 5.16 by KDE is Now Available

By *Roy Schestowitz*

Created 11/06/2019 - 12:15pm

Submitted by Roy Schestowitz on Tuesday 11th of June 2019 12:15:43 PM Filed under [KDE](#) [1]



Say hello to Plasma 5.16, a the newest iteration of KDE's desktop environment, chock-a-block with new features and improvements.

Let's start with Dolphin, Plasma's file and folder manager. It now opens folders you click on in new tabs instead of new windows, keeping everything together. You can try this out by clicking the Home folder icon on your desktop (which will open Dolphin and show the contents of Home), and then clicking the Trash can folder also on your desktop. The Trash can folder will open in a new tab of the existing Dolphin window. You can, of course, choose to open more than one Dolphin window -- after all, it wouldn't be Plasma without options -- but this is a feature that will keep things nice and tidy.

Talking about tidy: check out the new notification system! Not only can you mute notifications altogether with the Do Not Disturb mode, but the system also groups notifications by app. Like this, when you run through the history of past notifications, you can see all the messages from KDE Connect in one category, the download information in another, email alerts in a third, and so on.

Discover, Plasma's software manager, is also cleaner and clearer as it now has two distinct areas for downloading and installing software on the Update page. Besides, when updating, the completion bar now works correctly and the packages disappear from the list as the software manager completes their installation.

[2]

[KDE](#)

---

**Source URL:** <http://www.tuxmachines.org/node/124750>

**Links:**

[1] <http://www.tuxmachines.org/taxonomy/term/108>

[2] <https://dot.kde.org/2019/06/11/plasma-516-kde-now-available>