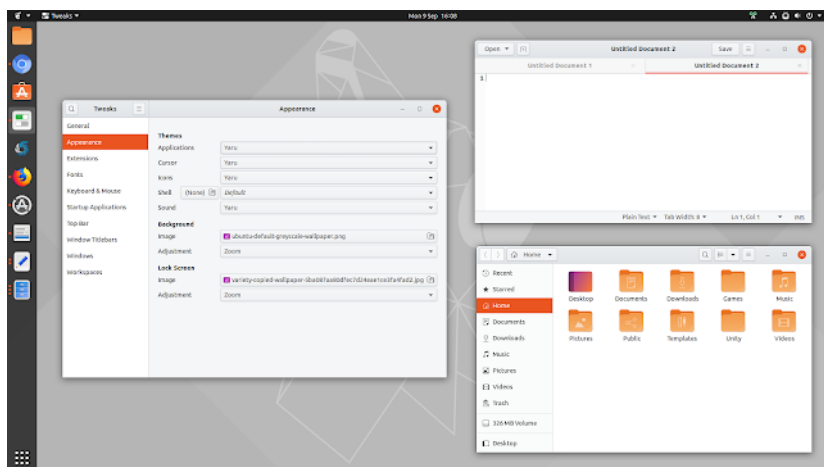


Ubuntu Yaru Theme Might Get A Full Light Version

By *Roy Schestowitz*

Created 09/09/2019 - 3:33pm

Submitted by Roy Schestowitz on Monday 9th of September 2019 03:33:19 PM Filed under [Ubuntu](#) [1]



Yaru theme might get a full light theme (and a full dark theme that already exists, but with further refinements) instead of the mixed theme that's currently default in Ubuntu.

While users have been voicing their opinion about the need of using a fully light theme with Ubuntu by default, that's not why there are talks to have a Yaru light theme. Instead, it looks like there are issues with the headerbar buttons lack of contrast compared to the background, and this is where the Yaru Light idea comes from.

Feichtmeier, a Yaru theme contributor, sums up the issues with using a mixed theme (light theme with dark headerbar), including in the argument that Gtk is not ready for an inverted headerbar, and that "in a normally lightened room at day the dark headerbar is worse usability wise than a light headerbar", also adding that basically all platforms or toolkits use a full light or full dark theme for day/night.

[2]

[Ubuntu](#)

Source URL: <http://www.tuxmachines.org/node/127929>

Links:

[1] <http://www.tuxmachines.org/taxonomy/term/121>

[2] <https://www.linuxuprising.com/2019/09/ubuntu-yaru-theme-might-get-full-light.html>