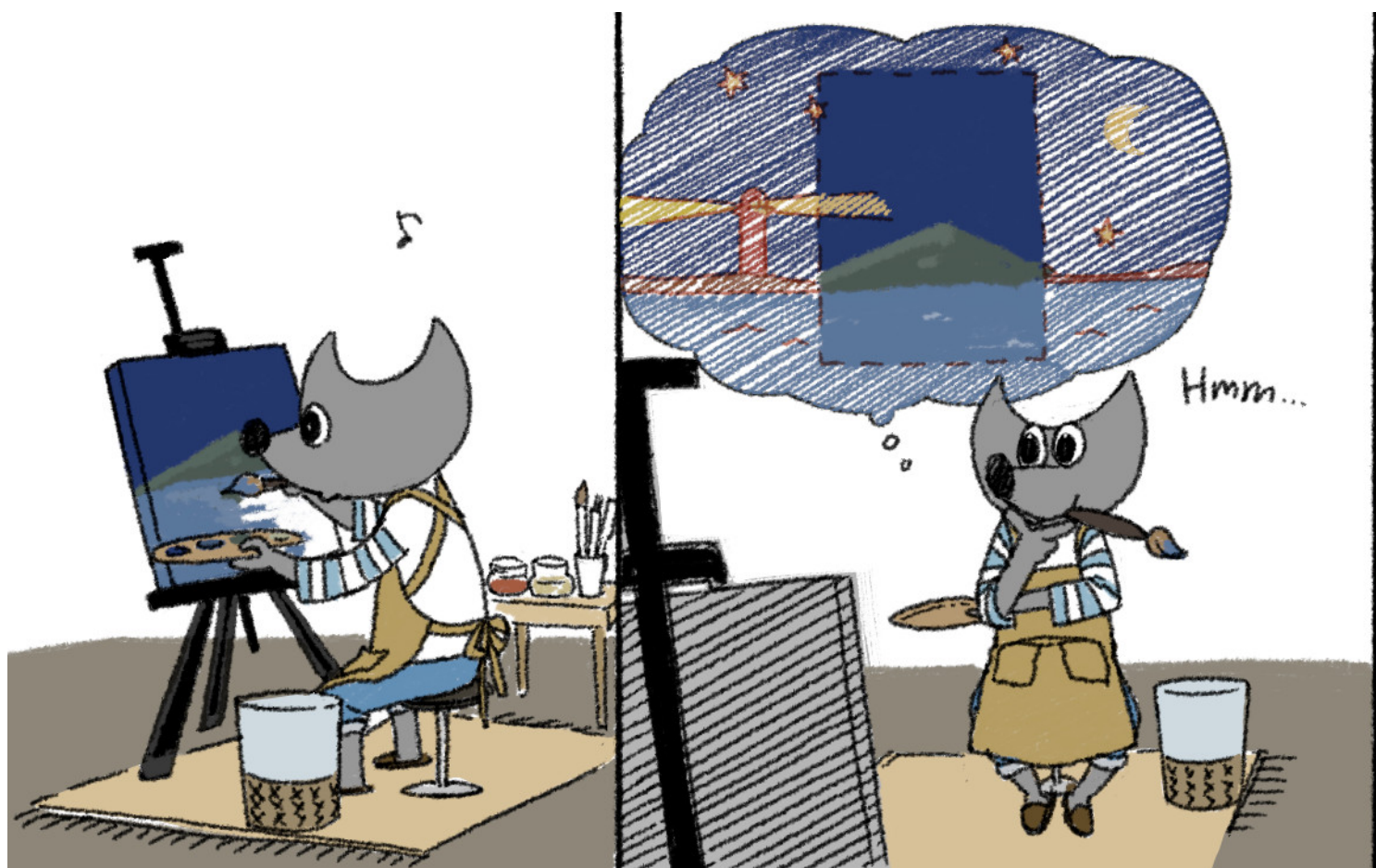


GIMP 2.10.14 Released

By *Rianne Schestowitz*

Created 31/10/2019 - 9:47pm

Submitted by Rianne Schestowitz on Thursday 31st of October 2019 09:47:05 PM Filed under [GNU](#) [1] [Software](#) [2]



This is basically the first shot at the previously missing feature set, so expect more to land to GIMP at some point in the future. Making selection tools work outside the canvas sounds like a sensible next step. Then maybe we can seriously talk about boundless canvas.

This new feature is closely related to out-of-canvas viewing and editing and was also contributed by Ell.

Now when you e.g. rotate a single-layer image, you can use this transform type to automatically expand the canvas to include all of rotated pixels when using the default Adjust clipping mode. The switch is right next to layer/path/selection toggle at the top of any transform tool's settings.

[3]

Also: [GIMP 2.10.14 Released With Better HEIF Support, More Filters Ported To Using GEGL](#) [4]

[GNU Software](#)

Source URL: <http://www.tuxmachines.org/node/129954>

Links:

[1] <http://www.tuxmachines.org/taxonomy/term/144>

[2] <http://www.tuxmachines.org/taxonomy/term/38>

[3] <https://www.gimp.org/news/2019/10/31/gimp-2-10-14-released/>

[4] http://www.phoronix.com/scan.php?page=news_item&px=GIMP-2.10.14-Released